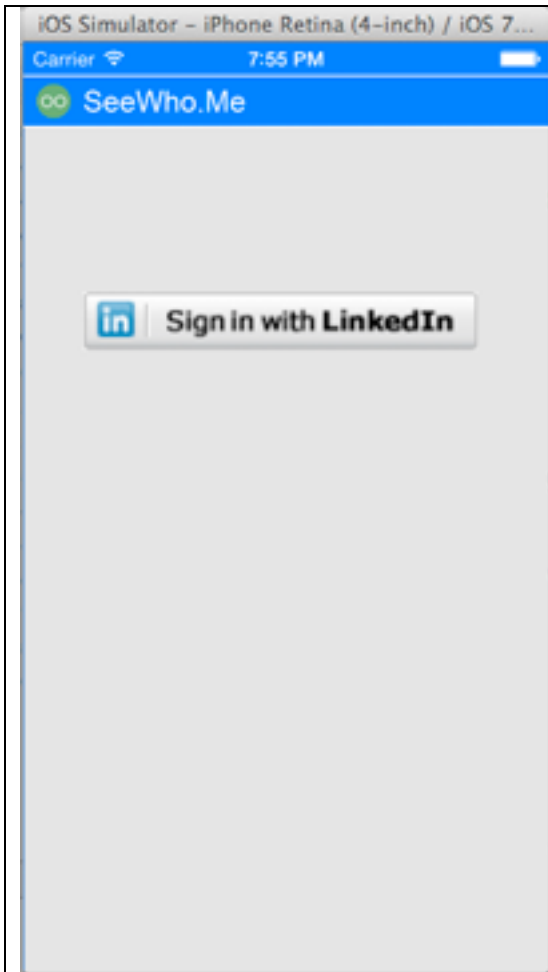
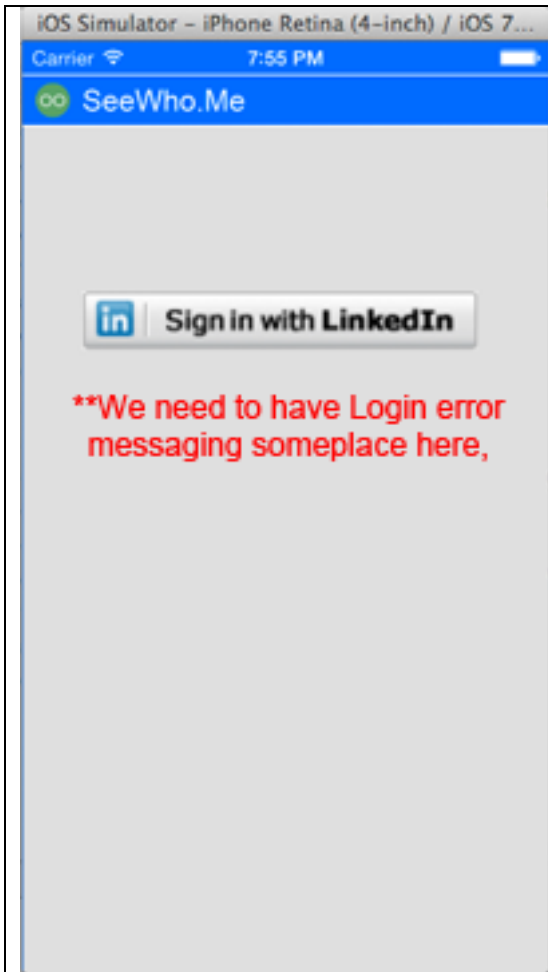




#1; Splash screen; only stays on screen for a few seconds



#2; Login screen; we can use this screen to add either static text describing the app, disclaimers, etc., and/or we can have an embedded slide show on the page that steps thru some example screens/tutorials e.g. like Firechat.



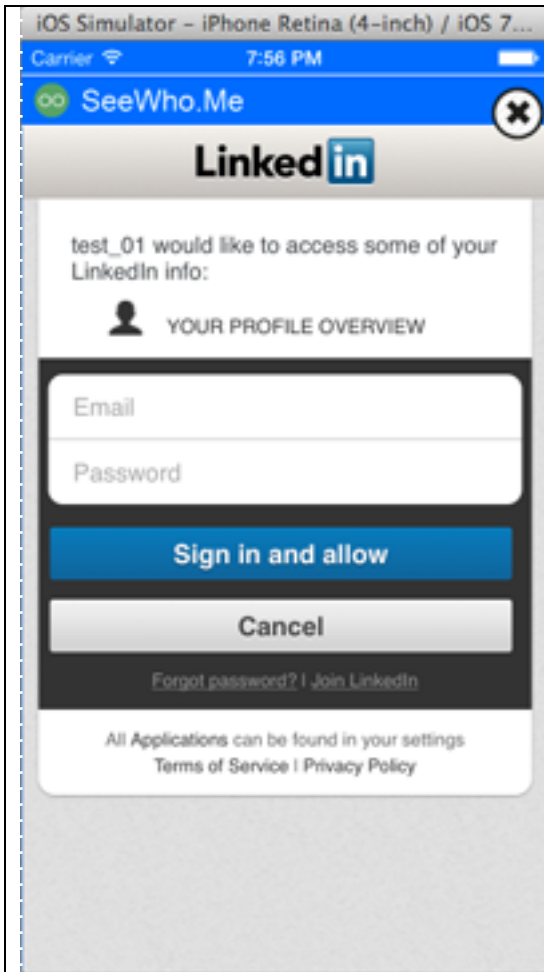
#2b; we need to leave space on this screen to display login error messages, i.e. if the user cancels login and/or the LinkedIn login fails.

We need to design the login page so that we can leave room for all the stuff we want or need to include, e.g.:

- a) tutorial/example slide show
- b) explanation / disclaimer text
- c) login error messages
- d) any other artwork e.g. logo, etc. we want to include.

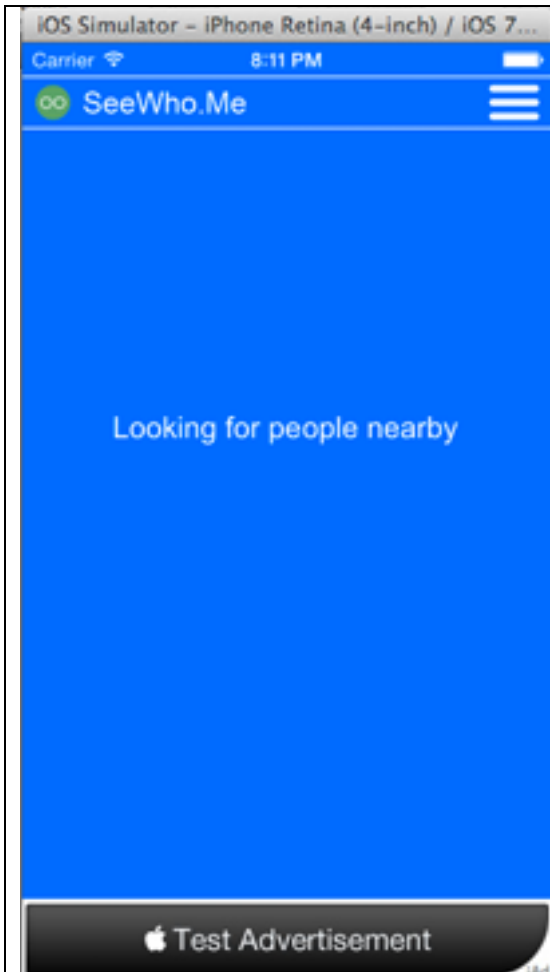
And of course...

- e) login button (which should be big enough and central enough to command the user's attention to tap it).



#3; After tapping the login button user goes to LinkedIn login/authentication; these screens are not under our design control; note the "close (X)" overlay I added to get user back to screen #2

Note: All screens have top nav, except for #1 splash. The top nav gets an additional pulldown menu icon after successful login.



#4; initial discovery screen, no users in proximity yet.



#5; users in proximity, grid filling up with thumbnails.

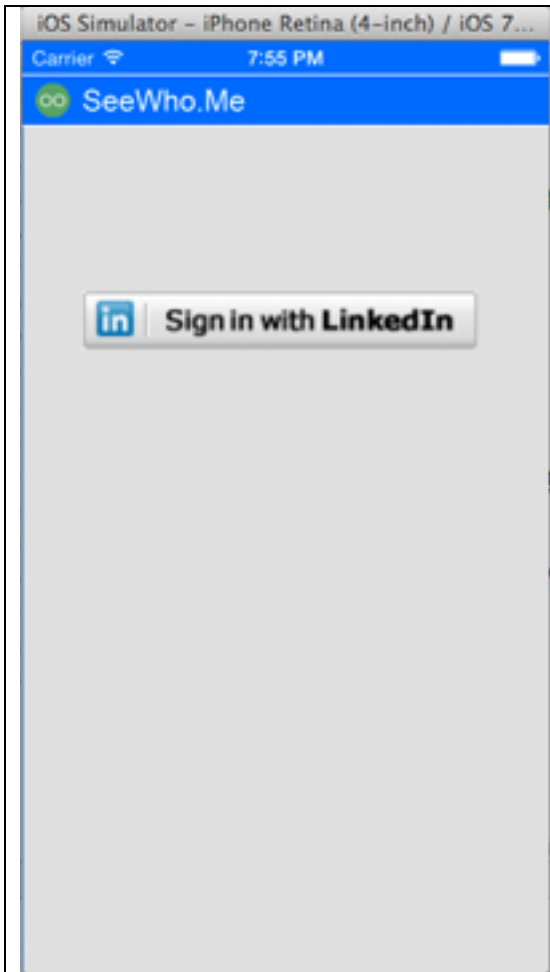


#6; info popup overlay for a user/thumbnail.



#7; logout menu is opened (after tapping menu icon in top nav).





#8; user logged out; after logout user is back at login page.